

# Report



**MSD**

Louisville and Jefferson County  
Metropolitan Sewer District

[www.msdlouky.org](http://www.msdlouky.org)

IN THIS ISSUE

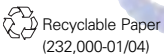


- DiverseWorks still working at MSD
- Technology helps reduce sewer overflows
- Floodplain maps going digital in 2004

**MSD's Customer**

*Service trouble-shooters  
can help you determine  
the cause and solutions  
to sewer problems.*

*Please call us first  
before calling  
your plumber!*



## Connect with MSD

Telephone: 24-hour Customer Service & Information . . . . . **587-0603**  
 Speech- and Hearing-impaired (TTY) . . . . . **540-6233**  
*Para el servicio de cliente en español, llame por favor*  
**540-6423** entre 8 a.m. y 5 p.m. lunes a viernes

Business Office and Information . . . . . **540-6000**  
 Monday — Friday  
 8:15 a.m. — 5 p.m. (except holidays)

Internet Home Page: . . . . . **<http://www.msdlouky.org/customer>**

Customer Service: . . . . . **<http://www.msdlouky.org/customer>**

Floodplain Information: . . . . . **Visit MSD's home page and click on  
Floodplain Information**

## DiverseWorks still working at MSD

Recent changes to DiverseWorks guidelines and business certification criteria are creating more opportunities for minority- and woman-owned businesses to work with MSD.

Engineering, professional and construction contracting objectives for woman-owned businesses have doubled from three percent to six percent. Goals for minority-owned firms remain at 15 percent.

The changes also respond to concerns raised by certified businesses, including faster payments to minority- and woman-owned subcontractors working with larger MSD contractors. New confidentiality assurances for certification applications are provided. A small business growth restriction has been removed, encouraging certified companies to thrive.

Additionally, expanded audit provisions and certification application fees will help MSD ensure that certifications are valid and defray the cost of field visits and other aspects of the process.

To obtain the revised guidelines, contact DiverseWorks Program Administrator Deby Mettling (**phone: 540-6261; e-mail: [mettling@msdlouky.org](mailto:mettling@msdlouky.org)**).



## Did You Know?

- Businesses owned by minorities and women performed almost \$19 million in construction and professional services work for MSD during fiscal year 2003. That's more than 25 percent of all contracts awarded.
- The biosolids drying process at the Morris Forman Wastewater Treatment Plant will save MSD about \$900,000 a year in landfill disposal fees.
- More than 45 square miles of Jefferson County is located in a floodplain and prone to flooding during heavy rains.



## New method used to repair sewers

It's a plastic material lined with nylon and felt. Filled with an epoxy mix, these common substances become a super-strong lining used to repair damaged sewer lines.



The lining system speeds up repairs in main sewer lines and property service connections, shaving weeks off repair time and saving thousands of dollars. Lining materials are injected in a pliable form into underground sewer lines, nearly eliminating the need to dig up yards and streets.

Before the lining process begins, liquid and debris are cleared from the sewer to be repaired. The lining is injected by low air pressure and, after three hours, is hardened and ready for use. Because the lining is seamless, tree roots can't grow through it like they can clay, cast iron and concrete sewers. (Tree roots can cause sewer backups.)

Last year MSD completed 1,620 sewer repairs at a cost of more than \$3 million. Each repair took an average of eight days to complete and up to 40 days during winter months if the repair required replacing concrete.

Using the injected lining system could save up to 60 percent of the cost to complete a single property service connection repair. Plus, most can be finished in a few hours.

MSD may also use the lining system to help keep groundwater out of sewers. That will help prevent overloading wastewater treatment facilities and sewers overflowing into streams.

## Clean Water

Moving wastewater from homes and businesses to treatment plants, safely and efficiently, is MSD's job. When it rains, that includes reducing discharges from the combined sanitary and storm sewers that serve most older neighborhoods.

MSD is using technology to take control of wet weather overflows. A system of telemetry, computer and radar signals will direct rainy-weather sewer flows to parts of the sewer system with enough capacity to store it until rains subside. Like street signals control traffic, the system routes wastewater from neighborhoods experiencing heavy rainfall to large combined sewers ranging from five to 27 feet in diameter.

The system will operate at five locations near the Morris Forman Wastewater Treatment Plant collection system. It will help keep combined sewers from overflowing as often into the Ohio River and Beargrass Creek, and direct wastewater to a treatment plant when the plant isn't overwhelmed.

Since 1998 MSD has invested \$134 million to take control of wet weather and reduce sewer overflows. Keeping wastewater where it belongs—in the sewer system—helps keep our community's streams and river clean.

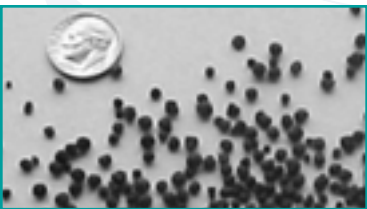


## Green Environment

No one thinks much about lush lawns and robust gardens in the winter. But at MSD, we're seeing greener landscapes.

Dried biosolid pellets from the wastewater treatment process performed well during a five-month test. Used as a soil amendment, the pellets spurred seed germination and grass growth in about two weeks. Results from odor and runoff monitoring indicate the pellets are safe to use.

The biosolid pellets are the end-result of an \$80-million heat-drying process for wastewater solids at the Morris Forman Wastewater Treatment Plant. While the heat-dried solids are less expensive to dispose of, MSD has worked to perfect the pellets, in order to provide a safe, easy-to-use soil amendment.



The biosolid pellets meet federal Class A requirements for use in land applications. That means levels of metals and minerals in the pellets are safe to use as a fertilizer component.

Now MSD is looking for opportunities to make the biosolid pellets available for public use. In the meantime, MSD is saving money by reducing the volumes of waste disposed at the community's landfill.

## Growing Community

This winter and spring, more than 270 miles of Jefferson County's streams will be surveyed and reviewed as MSD works to update the community's floodplain maps.

The existing maps are about 10 years old and aren't in a current digital format. Digital maps can be updated as changes occur, showing the impact on floodplains from new developments and stormwater management facilities.

Funded by a \$1.4 million grant from the Federal Emergency Management Agency, the new maps will be created under FEMA guidelines. If revisions are proposed to the floodplain maps, public meetings to solicit comments would occur in late 2004.

The current surveys and studies also will help MSD gauge the impact of its flood-reduction facilities and plan future strategies to minimize damages from flooding.

