

# CLOSING THE RECYCLING LOOP



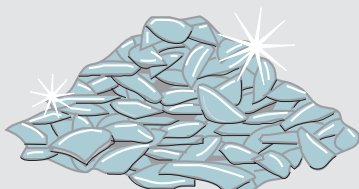
# MSD

## Floor Tile

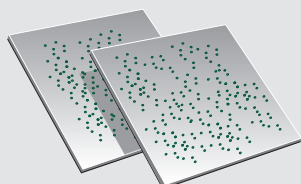
Recycling our wastes conserves energy and natural resources as well as landfill space. Pollution from resource extraction, power production, manufacturing and waste disposal are likewise reduced. Collecting and sorting wastes for recycling is useless without demand for products made from recycled materials.



**Post-Consumer Glass**



**Crushed Glass for Reuse**



**Floor Tiles**

### Recycled Tile Features

- The new floor tile in the Main Office lobby is made from approximately 70% pre-consumer and post-consumer glass wastes.
- "Pre-consumer" means the glass came from a batch that did not meet specifications; it was simply returned to the head of the plant for recycling.
- "Post-consumer" refers to glass containers, bought full of juice, pickles, etc, emptied and returned by the consumer for recycling via curbside collection or a drop-off center.
- Unlike other floor tile, this tile has a non-skid surface texture making it suitable for ADA approved uses.

### Anticipated Savings

Recycling a ton of glass saves over a ton of sand, soda ash, limestone and feldspar.

Recycling can cut manufacturing related air pollution by 20% and energy use by 32%.

Glass makes up about 7% by weight of a household's solid waste.



# WASTE WISE

