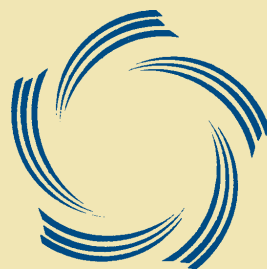


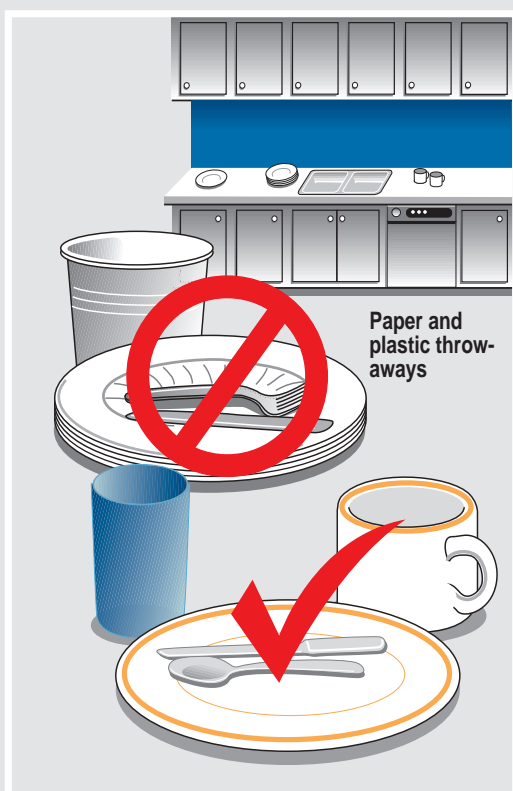
THE THREE Rs:
REDUCE,
REUSE,
RECYCLE



MSD

Lunches, Breaks and Meetings

The relative merits and demerits of paper, plastic and foam throw-away dinnerware are irrelevant, if reusables are considered. MSD stocks its kitchenettes with ceramic dishes and coffee cups, durable plastic tumblers and metal utensils.



- Americans are about 6% of the world's population, but we consume many times our share of the world's resources. The typical Louisvillian generates over 3 pounds of household solid waste daily.
- Throw-aways use large quantities of paper, petrochemicals and energy for single uses.
- In MSD kitchenettes, soiled items are collected and washed in dishwashers. Wastewater can be treated and reused over and over. (We ought to know!)
- Due to new federal standards, the average dishwasher sold after 1993 is 28% more energy efficient. MSD's dishwashers are 15% more efficient than the average current model.
- Refrigerators, microwave ovens and a stove encourage staff to bring lunch from home. This practice produces less packaging than the carry-out route.

Anticipated Savings

Waiting for data



WASTE
WISE



Main Office 1-99